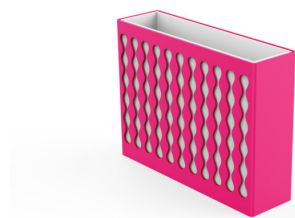


# PLANTERS: MULTIPLICITY SLIM



| Categories: [PLANTERS](#), [URBAN DESIGN](#)

## PRODUCT DESCRIPTION

Designer: [Karim Rashid](#)

The planter is made of 2 elements made in steel sheet, each one placed inside the other. Both the outer decorative part and the inner tray are the result of steel sheets of 40/10 thickness with a bottom of 20/10 thickness. On the bottom of the planter there is a drain pipe of 40 mm height, resulting from a tube 15X15x1,5mm.

This product is entirely made in Italy from steel subjected to an electrolytic galvanising cycle and subsequently painted with PP powders with Ral colour of your choice.

### Max Dimensions:

Height: **512,5 mm**

Width: **191 mm**

Length: **685 mm**

Capacity: **50 lt**

Weight: **49 kg**

Material: [steel](#)



## GALLERY IMAGES

