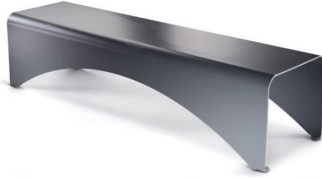


# BENCHES: PAPER



| Categories: [BENCHES](#), [URBAN DESIGN](#)

## PRODUCT DESCRIPTION

Designer: [Hangar Design Group](#)

The bench PAPER is made in steel, 60/10 thickness. The bench has 2 sheets welded together through a continuous welding, which creates the typical wave shape. The 90° bending of the sheet creates the feet of the bench with holes (11 mm diam.) for the fixing to the ground through specific bolts (not provided).

This product is entirely made in Italy from steel subjected to an electrolytic galvanising cycle and subsequently painted with PP powders with Ral colour of your choice.

As an alternative to steel EN10111DD11, the production in corten is also available, on demand. In this case the material is treated with a specific oxidation process.

### Max dimensions:

Height of seat: **450 mm**  
Width of seat: **1800 mm**  
Depth of the seat: **500 mm**  
Weight of steel: **88,5 Kg**

Material: [steel](#)



## GALLERY IMAGES

