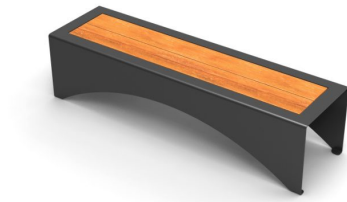


# BENCHES: PAPER WPC



| Categories: [BENCHES](#), [URBAN DESIGN](#)

## PRODUCT DESCRIPTION

Designer: [Hangar Design Group](#)

The load-bearing structure of the bench PAPER WPC is made in steel sheet, 60/10 thickness, and shapes its feet and seat. In the middle of the seat there are 2 slats in WPC (dimensions: 1580x160x22mm) supported by 3 elements, welded under the load-bearing structure, made in steel sheet of 50/10 thickness, and provided with holes for the fixing of the slats with specific bolts. The bench can be fixed to the ground through specific bolts (not provided) to be used on 4 holes (11 mm diam.) present on the feet.

This product is entirely made in Italy from steel subjected to an electrolytic galvanising cycle and subsequently painted with PP powders with Ral colour of your choice.

As an alternative to steel EN10111DD11, the production in corten is also available, on demand. In this case the material is treated with a specific oxidation process.

The WPC (Wood Plastic Composite) material is made of 70% recycled wood and 30% recycled plastic.

### Max dimensions:

Height seat: **450 mm**  
Length: **1800 mm**  
Width seat: **500 mm**  
Weight of the steel: **66 kg**

Materials: [steel and WPC](#)

