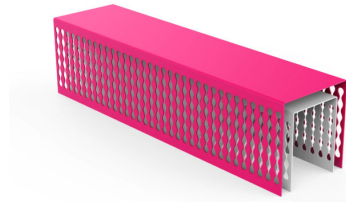


# BENCHES: MULTIPLICITY



| Categories: [BENCHES](#), [URBAN DESIGN](#)

## PRODUCT DESCRIPTION

Designer: [Karim Rashid](#)

Multiplicity Bench is made of two elements in steel sheet, which can have two different colours. The two parts are the result of a laser-cut and of the fold of the sheets (60/10 thickness). On each one 4 plates, with a hole 11 mm diam. For the fixing to the ground through specific bolts (not provided), are welded. During the installation, the inner, smaller element will have to be placed first, later the bigger, outer one.

This product is entirely made in Italy from steel subjected to an electrolytic galvanising cycle and subsequently painted with PP powders with Ral colour of your choice.

### Max Dimensions:

Height: **420 mm**  
Width: **400 mm**  
Length: **1642 mm**  
Weight: **147 kg**

Material: [steel](#)



## GALLERY IMAGES

